

# Shareholder Information

(As of March 31, 2012)

## Common Stock

Note: A 5 for 1 stock split was completed on April 1, 2006

Authorized:	40,000,000
Issued:	10,000,000
Number of shareholders:	51,995

## Administration of the Registry of Shareholders

The Mitsubishi UFJ Trust and Banking Corporation  
4-5, Marunouchi 1-chome, Chiyoda-ku, Tokyo

## Stock Exchange Listings

First Sections of Tokyo Stock Exchange  
First Sections of Osaka Securities Exchange  
First Sections of Nagoya Stock Exchange  
Fukuoka Stock Exchange  
Sapporo Securities Exchange

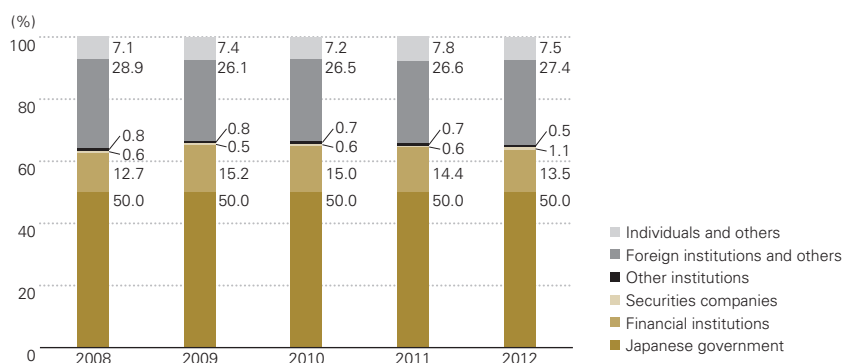
Note: JT applied for delisting from the Nagoya Stock Exchange, the Fukuoka Stock Exchange and the Sapporo Securities Exchange on April 16, 2012, and have delisted its share on May 28, 2012.

## Principal Shareholders

Name	Shares held
The Minister of Finance	5,001,335
Japan Trustee Services Bank, Ltd. (Trust Account)	226,192
State Street Bank and Trust Company (Standing Agent: Hongkong and Shanghai Banking Corporation, Tokyo branch)	210,864
The Master Trust Bank of Japan, Ltd. (Trust Account)	193,972
Mizuho Trust and Banking Co., Ltd., re-trusted to Trust & Custody Services Bank, Ltd., as retirement benefit trust assets	169,000
State Street Bank and Trust Company (Standing Agent: Mizuho Corporate Bank, Ltd., settlement division)	140,185
GOLDMAN, SACHS & Co. REG (Standing Agent: Goldman Sachs Japan Co., Ltd.)	119,353
NT RE GOVT OF SPORE INVT CORP P. LTD (Standing Agent: Hongkong and Shanghai Banking Corporation, Tokyo branch)	118,306
The Chase Manhattan Bank 385036 (Standing Agent: Mizuho Corporate Bank, Ltd., settlement division)	88,944
Mellon Bank N.A. as Agent for Its Client Mellon Omnibus U.S. Pension (Standing Agent: Mizuho Corporate Bank, Ltd., settlement division)	88,414

## Composition of Shareholders

(Years ended March 31)



## Offering JT Shares by Government

### 1st Offering

Method	Offering by Bids	Offering by non-Bids
Offer Price (Pricing Date)	Bid Price: From ¥1,362,000 to ¥2,110,000 Weighted Average Price: ¥1,438,000 (August 29, 1994)	¥1,438,000 (August 31, 1994)
Number of Offering shares	229,920 shares	164,356 shares
Offering Term	From August 15 to 18, 1994	From September 2 to 8, 1994

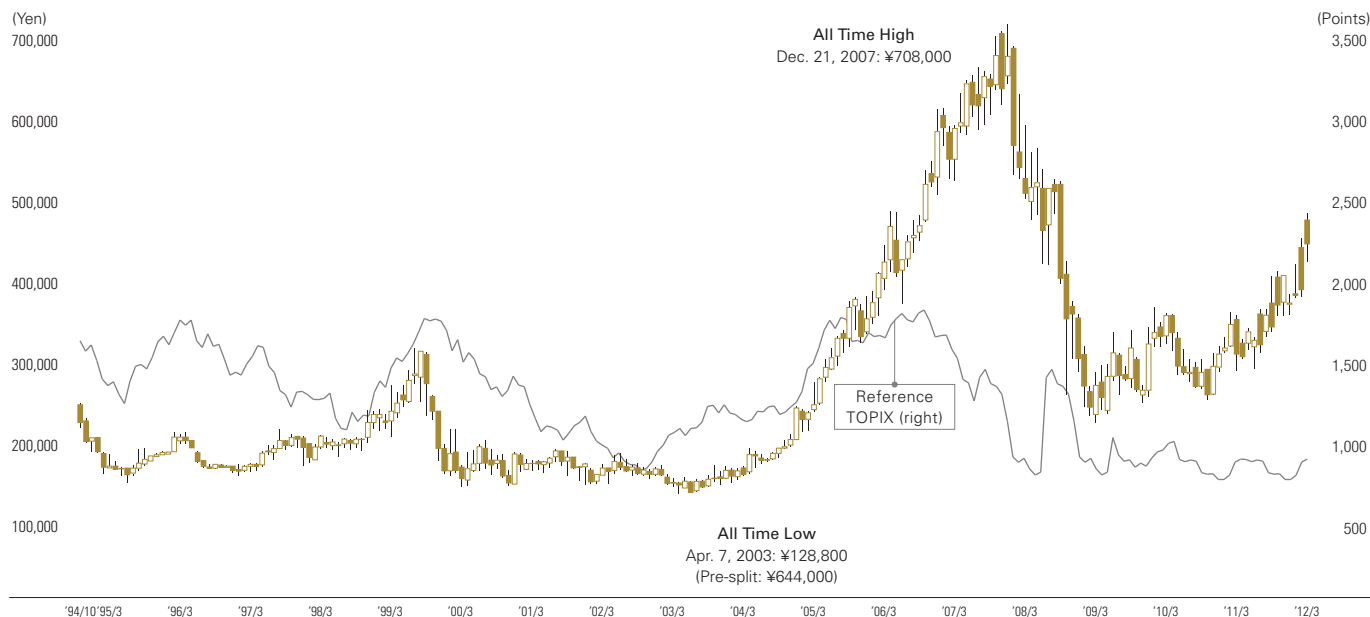
Note: The Listing date

October 27, 1994: First Sections of Tokyo Stock Exchange, Osaka Securities Exchange, and Nagoya Stock Exchange  
November 7, 1994: Other Stock Exchanges

### 2nd and 3rd Offering

	2nd Offering	3rd Offering
Method	Offering by Book-Building formula	Offering by Book-Building formula
Offer Price (Pricing Date)	Bid Price: ¥815,000 (June 17, 1996)	¥843,000 (June 7, 2004)
Number of Offering shares	Japan: 237,390 shares, International: 35,000 shares (Total: 272,390 shares)	Japan: 198,334 shares, International: 91,000 shares (Total: 289,334 shares)
Offering Term	From June 18 to 19, 1996	From June 8 to 10, 2004

## Stock Price Range and Trading Volume



Note: Due to a 5 for 1 stock split on April 1, 2006, stock prices reflect post-split levels

## JT Stock Data

(Years ended March 31)

	1995	1996	1997	1998	1999	2000	2001	2002	2003	2004	2005	2006	2007	2008	2009	2010	2011	2012
High (Yen)	240,000	204,000	204,000	208,000	262,000	308,000	193,800	182,800	178,000	163,600	266,000	435,000	604,000	708,000	555,000	358,000	352,000	<b>474,500</b>
Low (Yen)	153,200	142,000	149,600	156,400	174,000	137,200	138,000	139,000	137,600	128,800	152,800	238,000	362,000	492,000	216,000	227,000	243,900	<b>282,600</b>
Trading volume (shares)	207,678	162,657	330,107	362,349	315,892	567,207	448,631	464,116	500,302	596,318	1,213,156	1,412,073	6,119,498	5,660,892	7,699,734	6,589,843	5,795,471	<b>6,239,955</b>

Notes: 1. Highs, lows, and trading volume of shares refer to those on the First Section of the Tokyo Stock Exchange  
2. Due to a 5 for 1 stock split on April 1, 2006, stock prices reflect post-split levels

# Members of the Board, Auditors, and Executive Officers

(As of June 22, 2012)

## Members of the Board

---

Chairman of the Board

Hiroshi Kimura

Representative Directors

Mitsuomi Koizumi

Yasushi Shingai

Noriaki Okubo

Akira Saeki

Members of the Board

Hideki Miyazaki

Mutsuo Iwai

Motoyuki Oka\*

Main Kohda\*

\* Outside Directors under the Companies Act of Japan

## Auditors

---

Standing Auditors

Hisao Tateishi\*

Futoshi Nakamura

Auditors

Koichi Ueda\*

Yoshinori Imai\*

\* Outside Corporate Auditors under the Companies Act of Japan

## Executive Officers

---

President

Mitsuomi Koizumi

Chief Executive Officer

Executive Deputy Presidents

Yasushi Shingai

Compliance, Strategy, HR, General Administration,  
Legal and Operation Review & Business Assurance

Noriaki Okubo

Pharmaceutical and Food Businesses

Akira Saeki

President, Tobacco Business

Hideki Miyazaki

CSR, Finance and Communications

Senior Executive Vice Presidents

Kenji Iijima

Chief Marketing & Sales Officer, Tobacco Business

Ryoji Chijiwa

Compliance and General Affairs

Executive Vice President

Shinichi Murakami

Head of Domestic Leaf Tobacco General Division,  
Tobacco Business

Senior Vice Presidents

Kazuhito Yamashita

Chief Corporate, Scientific & Regulatory Affairs Officer,  
Tobacco Business

Masahiko Sato

Head of Manufacturing General Division,  
Tobacco Business

Atsuhiko Kawamata

Head of China Division, Tobacco Business

Junichi Haruta

Head of Central Pharmaceutical Research Institute,  
Pharmaceutical Business

Ryoko Nagata

Head of Beverages Business

Masamichi Terabatake

Chief Strategy Officer

Yasuyuki Tanaka

Chief Communications Officer

Yasuyuki Yoneda

Chief R&D Officer, Tobacco Business

Junichi Fukuchi

Head of Tobacco Business Planning Division,  
Tobacco Business

Muneaki Fujimoto

President, Pharmaceutical Business

Chito Sasaki

Chief Human Resources Officer

Naohiro Minami

Chief Financial Officer

Haruhiko Yamada

Chief General Affairs Officer

Kiyohide Hirowatari

Chief Legal Officer

Note: Job title of Executive Officers are outlined in accordance with HR personnel appointment on July 1, 2012.

# Corporate Data

(As of March 31, 2012)

## Head Office

2-1, Toranomon 2-chome,  
Minato-ku, Tokyo 105-8422, Japan  
Tel: 81-3-3582-3111  
Fax: 81-3-5572-1441  
URL: <http://www.jt.com/>

## Date of Establishment

April 1, 1985

## Paid-in Capital

¥100 billion

## Number of Employees

48,529 (Consolidated)  
8,936 (Parent Company)

## Domestic Sales Offices

Hokkaido (Hokkaido)  
Sendai (Miyagi)  
Tokyo (Tokyo)  
Nagoya (Aichi)  
Osaka (Osaka)  
Hiroshima (Hiroshima)  
Shikoku (Kagawa)  
Fukuoka (Fukuoka)  
17 other sales offices

## Domestic Factories

Kita-Kanto (Tochigi)  
Tokai (Shizuoka)  
Kansai (Kyoto)  
Kyushu (Fukuoka)  
6 other factories

## Domestic Laboratories

Leaf Tobacco Research Center (Tochigi)  
Tobacco Science Research Center (Kanagawa)  
Central Pharmaceutical Research Institute (Osaka)

## JT International S.A.

1, Rue de la Gabelle CH-1211 Geneva 26, Switzerland  
Tel: +41(0)22-7030-777  
Fax: +41(0)22-7030-789  
URL: <http://www.jti.com/>

## Members of JT International Executive Committee

Pierre de Labouchere  
President and Chief Executive Officer

Mutsuo Iwai  
Executive Vice-President and Deputy CEO

Thomas A. McCoy  
Chief Operating Officer

Paul Bourassa  
Senior Vice-President Legal, Regulatory Affairs & Compliance

Martin Braddock  
Regional President, CIS, Romania, Adriatica

Stefan Fitz  
Regional President, Asia Pacific

Roland Kostantos  
Senior Vice-President Finance, Information Technology and Chief Financial Officer

Paul Neumann  
Senior Vice-President Global Leaf

Howard Parks  
Senior Vice-President Consumer & Trade Marketing

Fadoul Pekhazis  
Regional President, Middle East, Near East, Africa, Turkey and World Wide Duty Free

Eddy Pirard  
Regional President, Western Europe

Michel Poirier  
Regional President, Americas

Jörg Schappei  
Senior Vice-President Human Resources

Bill Schulz  
Senior Vice-President Global Supply Chain

Takehisa Shibayama  
Senior Vice-President Research & Development

Vassilis Vovos  
Regional President, Central Europe

Frits Vranken  
Senior Vice-President Business Development and Corporate Communications