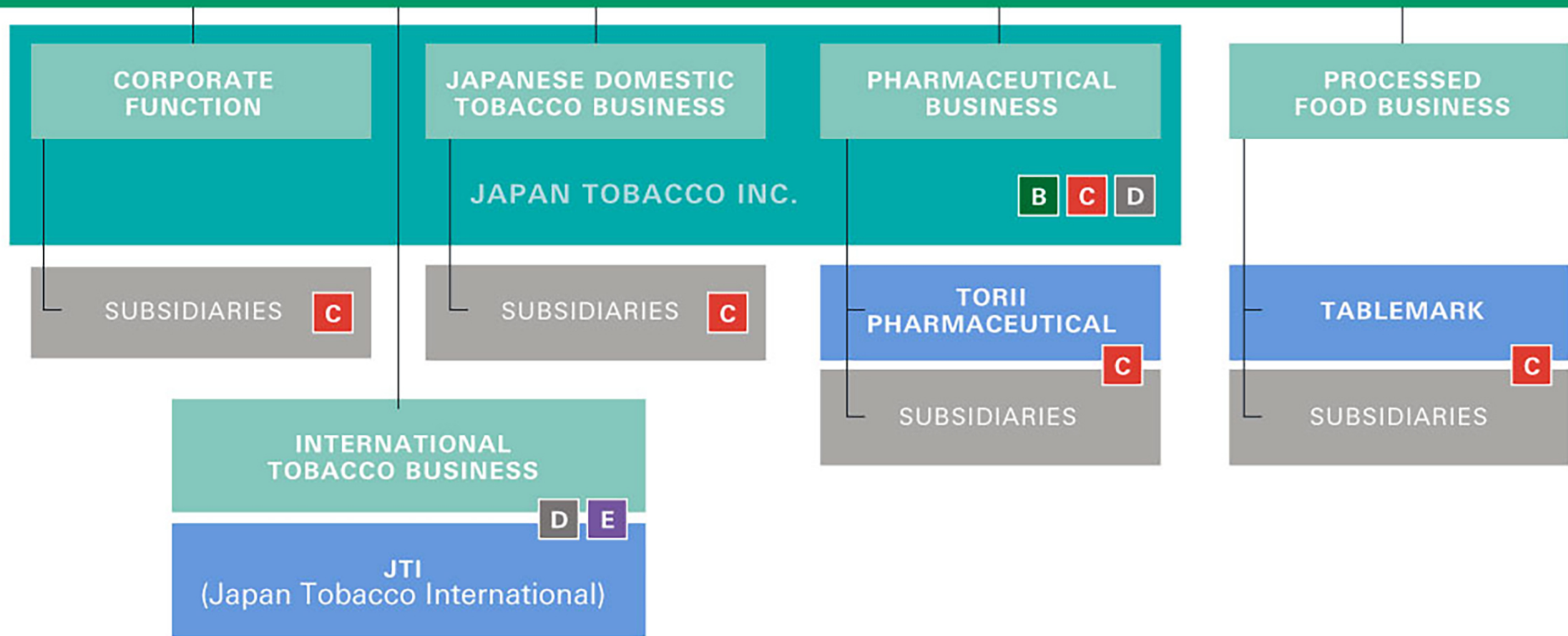


THE JT GROUP

A



A The entire JT Group, including subsidiaries: our international tobacco, Japanese domestic tobacco, pharmaceutical, and processed food businesses

B Solely our Japanese domestic tobacco and pharmaceutical businesses: Japan Tobacco Inc. (JT) (excludes our international tobacco business, processed food business, and subsidiaries of all businesses)

C Our Japanese operations, including subsidiaries of Japanese domestic businesses: Japan Tobacco Inc. (JT) and Japanese domestic Group companies (excludes our international tobacco business)

D Our Japanese domestic tobacco and pharmaceutical businesses - Japan Tobacco Inc. (JT); and our international tobacco business - Japan Tobacco International (JTI).

E Solely our international tobacco business: Japan Tobacco International (JTI)